

# GATANKER

## SYSTEEMOVERZICHT



# Gatankersysteem



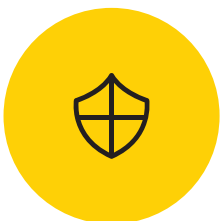
Belastingsklasse  
1,25 - 26 T



Volgens Machinerichtlijn  
2006/42/EG






Volgens  
VDI/BV-BS 6205


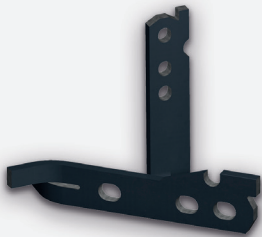





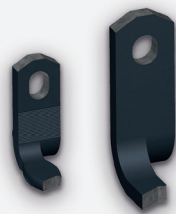
Kerfslagvastheid  
tot -20°C





# Gatankersysteem

|                            | Spreidanker   | Tweegatsanker   | Universeelanker   |
|----------------------------|---|---|---|
|                            |  |  |  |
| <b>Toepassingsgebieden</b> | Wanden, balken, kolommen en $\pi$ -platen   | Lichtbeton, lage betondruksterkte en dunne wanden                                 | Zoals spreidanker, tweegatsanker en tweezijdig kantelanker                          |
| <b>Belastingsklasse</b>    | 2,5 - 26  | 2,5 - 26  | 1,25  |

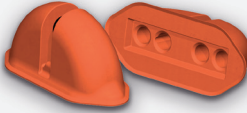

|                            | Tweezijdig kantelanker   | Eenzijdig kantelanker  | Dubbelgatsanker   |
|----------------------------|--|--|---|
|                            |  |  |  |
| <b>Toepassingsgebieden</b> | Kantelen van elementen zonder kantelafel   | Kantelen van elementen zonder kantelafel   | Kolommen  |
| <b>Belastingsklasse</b>    | 2,5 - 26   | 2,5 - 26   | 2,5 - 26  |

|                            | Plaatanker  | Sandwichanker   | Vlakvoetanker   |
|----------------------------|---|---|---|
|                            |  |  |  |
| <b>Toepassingsgebieden</b> | Dunne vloerelementen  | Sandwichelementen   | Buizen en vloerplaten   |
| <b>Belastingsklasse</b>    | 2,5 - 10  | 2,5 - 26  | 2,5 - 26  |

## Hijsmiddelen

|                               | Ringkoppeling   | Ringkoppeling met staalkabel  |
|-------------------------------|---|---|
|                               |  |  |
| <b>Uitvoering</b>             | Met stalen beugel   | Met staalkabel  |
| <b>Belastings-<br/>klasse</b> | 2,5 - 26  | 1,25  |

## Toebehoren

|                               | Rubber  | Magnetisch  |
|-------------------------------|---|---|
|                               |  |  |
| <b>Uitvoering</b>             | Bevestiging met schroefdraad  | Magnetische bevestiging   |
| <b>Belastings-<br/>klasse</b> | 2,5 - 26  | 2,5 - 26  |

# Gatankersysteem

## Spreidanker



| Belastings-<br>klasse | Thermisch verzinkt |               | Walsblank      |               |
|-----------------------|--------------------|---------------|----------------|---------------|
|                       | Lengte<br>[mm]     | Artikelnummer | Lengte<br>[mm] | Artikelnummer |
| <b>2,5</b>            | 110                | 512SA007110TV | 110            | 512SA007110ZW |
|                       | 110                | 512SA014110TV | 110            | 512SA014110ZW |
|                       | 160                | 512SA014160TV | 160            | 512SA014160ZW |
|                       | 130                | 512SA020130TV | 130            | 512SA020130ZW |
|                       | 160                | 512SA020160TV | 160            | 512SA020160ZW |
|                       | 210                | 512SA020210TV | 210            | 512SA020210ZW |
|                       | 150                | 512SA025150TV | 150            | 512SA025150ZW |
|                       | 200                | 512SA025200TV | 200            | 512SA025200ZW |
|                       | 250                | 512SA025250TV | 250            | 512SA025250ZW |
| <b>5,0</b>            | 160                | 512SA030160TV | 160            | 512SA030160ZW |
|                       | 200                | 512SA030200TV | 200            | 512SA030200ZW |
|                       | 280                | 512SA030280TV | 280            | 512SA030280ZW |
|                       | 180                | 512SA040180TV | 180            | 512SA040180ZW |
|                       | 240                | 512SA040240TV | 240            | 512SA040240ZW |
|                       | 320                | 512SA040320TV | 320            | 512SA040320ZW |
|                       | 180                | 512SA050180TV | 180            | 512SA050180ZW |
|                       | 240                | 512SA050240TV | 240            | 512SA050240ZW |
|                       | 400                | 512SA050400TV | 400            | 512SA050400ZW |
| <b>10,0</b>           | 260                | 512SA075260TV | 260            | 512SA075260ZW |
|                       | 300                | 512SA075300TV | 300            | 512SA075300ZW |
|                       | 420                | 512SA075420TV | 420            | 512SA075420ZW |
|                       | 300                | 512SA100300TV | 300            | 512SA100300ZW |
|                       | 370                | 512SA100370TV | 370            | 512SA100370ZW |
|                       | 520                | 512SA100520TV | 520            | 512SA100520ZW |
| <b>26,0</b>           | 370                | 512SA140370TV | 370            | 512SA140370ZW |
|                       | 460                | 512SA140460TV | 460            | 512SA140460ZW |
|                       | 500                | 512SA220500TV | 500            | 512SA220500ZW |
|                       | 260                | 512SA220620TV | 620            | 512SA220620ZW |

## Tweegatsanker



| Thermisch verzinkt |             |               | Walsblank   |               |
|--------------------|-------------|---------------|-------------|---------------|
| Belastings-klasse  | Lengte [mm] | Artikelnummer | Lengte [mm] | Artikelnummer |
| 2,5                | 90          | 512TA014090TV | 90          | 512TA014090ZW |
|                    | 90          | 512TA020090TV | 90          | 512TA020090ZW |
|                    | 90          | 512TA025090TV | 90          | 512TA025090ZW |
| 5,0                | 120         | 512TA030120TV | 120         | 512TA030120ZW |
|                    | 120         | 512TA040120TV | 120         | 512TA040120ZW |
|                    | 120         | 512TA050120TV | 120         | 512TA050120ZW |
| 10,0               | 160         | 512TA075160TV | 160         | 512TA075160ZW |
|                    | 165         | 512TA100165TV | 165         | 512TA100165ZW |
| 26,0               | 240         | 512TA140240TV | 240         | 512TA140240ZW |
|                    | 300         | 512TA220300TV | 300         | 512TA220300ZW |
|                    |             | 512TA260300TV |             | 512TA260300ZW |

## Universeelanker



| Thermisch verzinkt |             |               | Walsblank   |               |
|--------------------|-------------|---------------|-------------|---------------|
| Belastings-klasse  | Lengte [mm] | Artikelnummer | Lengte [mm] | Artikelnummer |
| 1,25               | 120         | 512UA012120TV | 120         | 512UA012120ZW |

# Gatankersysteem

## Tweezijdigkantelanker



| Belastings-<br>klasse | Lengte<br>[mm] | Thermisch verzinkt |                | Walsblank     |  |
|-----------------------|----------------|--------------------|----------------|---------------|--|
|                       |                | Artikelnummer      | Lengte<br>[mm] | Artikelnummer |  |
| 2,5                   | 200            | 512TK014200TV      | 200            | 512TK014200ZW |  |
|                       | 230            | 512TK025230TV      | 230            | 512TK025230ZW |  |
| 5,0                   | 270            | 512TK040270TV      | 270            | 512TK040270ZW |  |
|                       | 290            | 512TK050290TV      | 290            | 512TK050290ZW |  |
| 10,0                  | 320            | 512TK075320TV      | 320            | 512TK075320ZW |  |
|                       | 390            | 512TK100390TV      | 390            | 512TK100390ZW |  |
| 26,0                  | 500            | 512TK125500TV      | 500            | 512TK125500ZW |  |
|                       | 500            | 512TK170500TV      | 500            | 512TK170500ZW |  |
|                       | 500            | 512TK220500TV      | 500            | 512TK220500ZW |  |

## Eenzijdigkantelanker



| Belastings-<br>klasse | Lengte<br>[mm] | Thermisch verzinkt |                | Walsblank     |  |
|-----------------------|----------------|--------------------|----------------|---------------|--|
|                       |                | Artikelnummer      | Lengte<br>[mm] | Artikelnummer |  |
| 2,5                   | 200            | 512EK014200TV      | 200            | 512EK014200ZW |  |
|                       | 230            | 512EK025230TV      | 230            | 512EK025230ZW |  |
| 5,0                   | 270            | 512EK040270TV      | 270            | 512EK040270ZW |  |
|                       | 290            | 512EK050290TV      | 290            | 512EK050290ZW |  |
| 10,0                  | 320            | 512EK075320TV      | 320            | 512EK075320ZW |  |
|                       | 390            | 512EK100390TV      | 390            | 512EK100390ZW |  |
| 26,0                  | 500            | 512EK125500TV      | 500            | 512EK125500ZW |  |
|                       | 500            | 512EK170500TV      | 500            | 512EK170500ZW |  |
|                       | 500            | 512EK220500TV      | 500            | 512EK220500ZW |  |

## Dubbelgatsanker



| Belastings-<br>klasse | Thermisch verzinkt |               | Walsblank      |               |
|-----------------------|--------------------|---------------|----------------|---------------|
|                       | Lengte<br>[mm]     | Artikelnummer | Lengte<br>[mm] | Artikelnummer |
| <b>2,5</b>            | 228                | 512DG025228TV | 228            | 512DG025228ZW |
|                       | 278                | 512DG025278TV | 278            | 512DG025278ZW |
|                       | 328                | 512DG025328TV | 328            | 512DG025328ZW |
| <b>5,0</b>            | 226                | 512DG050226TV | 226            | 512DG050226ZW |
|                       | 276                | 512DG050276TV | 276            | 512DG050276ZW |
|                       | 326                | 512DG050326TV | 326            | 512DG050326ZW |
|                       | 376                | 512DG050376TV | 376            | 512DG050376ZW |
|                       | 426                | 512DG050426TV | 426            | 512DG050426ZW |
|                       | 476                | 512DG050476TV | 476            | 512DG050476ZW |
| <b>10,0</b>           | 262                | 512DG075262TV | 262            | 512DG075262ZW |
|                       | 312                | 512DG075312TV | 312            | 512DG075312ZW |
|                       | 362                | 512DG075362TV | 362            | 512DG075362ZW |
|                       | 412                | 512DG075412TV | 412            | 512DG075412ZW |
|                       | 462                | 512DG075462TV | 462            | 512DG075462ZW |
|                       | 262                | 512DG100262TV | 262            | 512DG100262ZW |
|                       | 312                | 512DG100312TV | 312            | 512DG100312ZW |
|                       | 362                | 512DG100362TV | 362            | 512DG100362ZW |
|                       | 412                | 512DG100412TV | 412            | 512DG100412ZW |
| 462                   | 512DG100462TV      | 462           | 512DG100462ZW  |               |
| <b>26,0</b>           | 362                | 512DG125362TV | 362            | 512DG125362ZW |
|                       | 412                | 512DG125412TV | 412            | 512DG125412ZW |
|                       | 462                | 512DG125462TV | 462            | 512DG125462ZW |
|                       | 362                | 512DG170362TV | 362            | 512DG170362ZW |
|                       | 412                | 512DG170412TV | 412            | 512DG170412ZW |
|                       | 462                | 512DG170462TV | 462            | 512DG170462ZW |
|                       | 412                | 512DG220412TV | 412            | 512DG220412ZW |
|                       | 462                | 512DG220462TV | 462            | 512DG220462ZW |
|                       | 562                | 512DF220562TV | 562            | 512DF220562ZW |



# Gatankersysteem

## Plaatanker



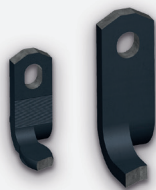
| Belastings-<br>klasse | Thermisch verzinkt |                | Walsblank      |                |
|-----------------------|--------------------|----------------|----------------|----------------|
|                       | Lengte<br>[mm]     | Artikelnummer  | Lengte<br>[mm] | Artikelnummer  |
| 2,5                   | 55                 | 512PA0140055TV | 55             | 512PA0140055ZW |
|                       | 80                 | 512PA0250080TV | 85             | 512PA0250080ZW |
| 5,0                   | 120                | 512PA0500120TV | 120            | 512PA0500120ZW |
| 10,0                  | 160                | 512PA1000160TV | 160            | 512PA1000160ZW |

## Sandwichanker



| Belastings-<br>klasse | Thermisch verzinkt |               | Walsblank      |               |
|-----------------------|--------------------|---------------|----------------|---------------|
|                       | Lengte<br>[mm]     | Artikelnummer | Lengte<br>[mm] | Artikelnummer |
| 2,5                   | 250                | 512SW025250TV | 250            | 512SW025250ZW |
| 5,0                   | 300                | 512SW050300TV | 300            | 512SW050300ZW |
| 10,0                  | 350                | 512SW075350TV | 350            | 512SW075350ZW |
|                       | 350                | 512SW100350TV | 350            | 512SW100350ZW |
| 26,0                  | 400                | 512SW170400TV | 400            | 512SW170400ZW |

## Vlakvoetanker



| Belastings-<br>klasse | Thermisch verzinkt |               | Walsblank      |               |
|-----------------------|--------------------|---------------|----------------|---------------|
|                       | Lengte<br>[mm]     | Artikelnummer | Lengte<br>[mm] | Artikelnummer |
| <b>2,5</b>            | 65                 | 512VA007065TV | 65             | 512VA007065ZW |
|                       | 65                 | 512VA014065TV | 65             | 512VA014065ZW |
|                       | 70                 | 512VA020070TV | 70             | 512VA020070ZW |
|                       | 75                 | 512VA025075TV | 75             | 512VA025075ZW |
| <b>5,0</b>            | 90                 | 512VA030090TV | 90             | 512VA030090ZW |
|                       | 110                | 512VA040110TV | 110            | 512VA040110ZW |
|                       | 125                | 512VA050125TV | 125            | 512VA050125ZW |
| <b>10,0</b>           | 170                | 512VA075170TV | 170            | 512VA075170ZW |
|                       | 200                | 512VA100200TV | 200            | 512VA100200ZW |
| <b>26,0</b>           | 220                | 512VA125220TV | 220            | 512VA125220ZW |
|                       | 270                | 512VA170270TV | 270            | 512VA170270ZW |
|                       | 310                | 512VA220310TV | 310            | 512VA220310ZW |

# Gatankersysteem

## Hijsmiddelen

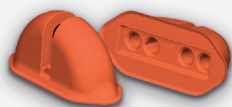


Ringkoppeling

Ringkoppeling met staalkabel

| Belastings-klasse | Artikelnummer | Artikelnummer |
|-------------------|---------------|---------------|
| 1,25              |               | 512RK012      |
| 2,5               | 512RK025      |               |
| 5,0               | 512RK050      |               |
| 10,0              | 512RK100      |               |
| 26,0              | 512RK260      |               |

## Toebehoren



Rubber

Magnetisch

| Belastings-klasse | Artikelnummer | Artikelnummer |
|-------------------|---------------|---------------|
| 1,25              | 512HB012      |               |
| 2,5               | 512HB025      | 512HB025M     |
| 5,0               | 512HB050      | 512HB050M     |
| 10,0              | 512HB100      |               |
| 26,0              | 512HB260      |               |

